



# MONITOR MAGIC



## Increase uptime of your infrastructure

MonitorMagic delivers a comprehensive enterprise-class solution for centralized management of performance and availability of hardware, operating systems and applications. MonitorMagic enables system administrators to take full control of distributed environments by identifying and resolving potential problems before end users are affected. This results in increased end-user satisfaction together with a reduction of spent time and effort.

### BENEFITS

#### Lower TCO (Total Cost of Ownership)

MonitorMagic will bring light to the darkest regions of your network. Using the effective combination of pro-active performance monitoring, event log archiving, application thresholds and graph trending, you can easily spot hardware and software weaknesses and act before your end users are affected. Not only will this drastically lower your TCO, you can also avoid unnecessary hardware investments based on performance trending predictions.

#### Hardware, Operating System and Application Monitoring

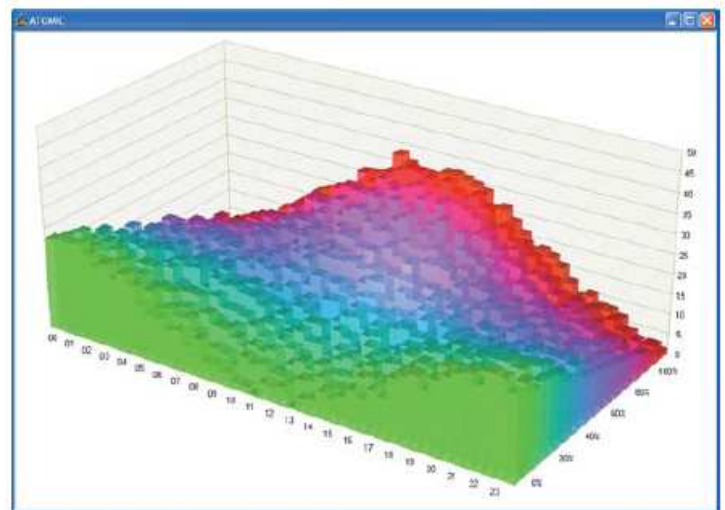
MonitorMagic runs on all Windows 2003/XP/2000/NT workstation or server versions and can grab performance and status data from virtually every component on your network such as operating systems, SNMP compliant network components, Dell® and HP/Compaq® servers, printers, Active Directory, Exchange, SQL Server, Terminal Server and many more.

#### Centralized Agentless Monitoring and Collection

MonitorMagic's unique client-server architecture guarantees hassle-free client and agent deployment. Both MonitorMagic client and agent can be installed on any type of Windows 2003/XP/2000/NT server or workstation computer. A single MonitorMagic agent can monitor multiple other computers or devices remotely without installing any software or leaving a footprint. Each agent can be connected to a database to store monitoring data, and multiple agents can share a single, central database to consolidate trending data.

#### Scalable from One Server to WAN-LAN Hybrid Networks

Whether you run a single server network or a multi-office WAN connected hybrid network, MonitorMagic will always deliver the performance needed to keep your environment up and running. MonitorMagic agents can be deployed locally on your central network or remotely at each office, and can be managed and configured from any location. For maximum performance, multiple agents can be deployed for monitoring load balancing.



#### Event Log Archiving and Reporting

MonitorMagic includes a powerful report data collector which can be scheduled to visit all your servers at night and gather all Windows event logs. These logs are then recorded into a central Microsoft® Access, SQL Server or MSDE database. Using the included report data generator and template builder, MonitorMagic can produce company tailored reports realtime on the screen for easy printing or HTML export, or send the reports automatically to the network support staff each week.

#### Unique Flexible Plug-in Architecture

If you have an application or device that is not directly supported by MonitorMagic's base set of Q&A monitors, but rather uses its own proprietary tools or scripts, simply plug these into MonitorMagic. The plug-in architecture allows the scheduled execution of any command and grabs the results from the screen. Based on these results, you can have MonitorMagic notify you or take appropriate actions.

## FEATURES

### MonitorMagic:

- > Supports Windows 2008/2003/XP/2000/NT.
- > Agent runs as a native Windows 2003/XP/2000/NT service.
- > Agentless monitoring; service can run on any workstation or server and monitor remote computers and SNMP devices.
- > Monitor policies; save monitoring configuration for quick and easy deployment on production servers.
- > Built-in monitor policy editor.
- > Database support for Microsoft® Access, Microsoft® SQL Server 2000/2005/2008 and MSDE.
- > Supports monitor database storage.
- > Supports event log database archiving.
- > Control Center for easy agent browsing and configuration.
- > Global Alarm window for centralized access to all local and remote alerts.

### Web interface:

- > Integrated web server, no IIS needed.
- > HTTPS access using SSL 128bit encryption.
- > Configurable access levels.
- > View computer statistics including uptime.
- > View/purge Windows event logs.
- > View/manage services and processes.
- > Reboot/shutdown remote computers.
- > View/manage active monitors and rules.

### Q&A Resource Monitors:

- > Event log messages.
- > Disk status and performance.
- > Directory and share status and statistics.
- > Performance counter information.
- > Service status information.
- > System processes.
- > SNMP devices.
- > SNMP traps.
- > Ping statistics.
- > TCP/IP port information.
- > URL response time and header check.
- > REXEC remote command execution, SSH, etc.
- > File characteristics.
- > File content analysis.
- > Cluster resource statistics and performance.
- > Command line plug-in support for flexible custom command integration.

### Reporting:

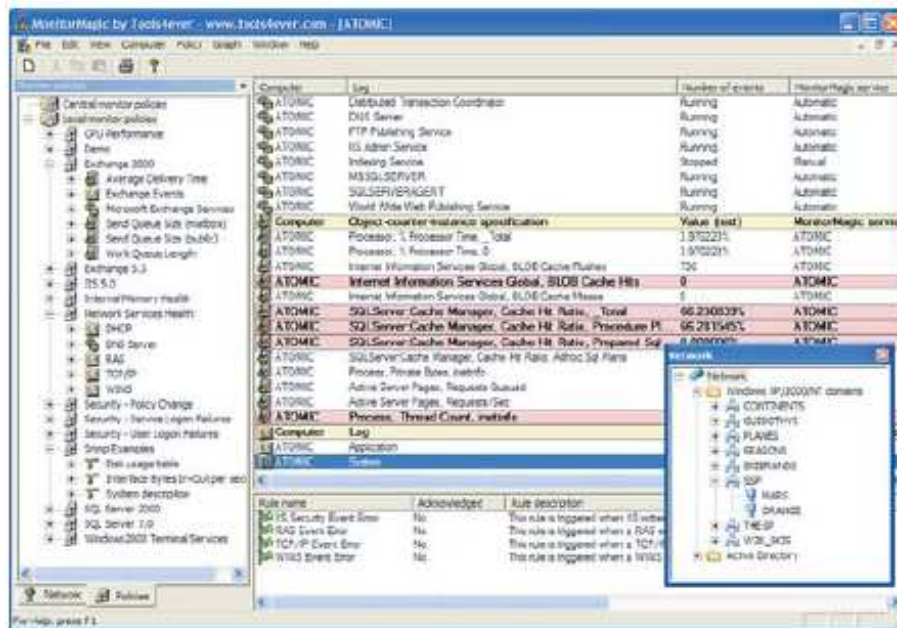
- > Scheduled data collection for multiple computers.
- > Data caching for maximum data integrity.
- > Ships with pre-defined and editable reports.
- > Advanced custom SQL queries.
- > Built-in printing.
- > Built-in HTML export.
- > Built-in report template editor and generator.

### Notifications and Actions:

- > Custom scheduling.
- > Execution delay.
- > Custom keywords.
- > Popup messages.
- > Email messages.
- > Pager/SMS messages with built-in modem connection software.
- > Windows event log entry.
- > SNMP traps.
- > Command line, script and batch file execution.
- > Start or Stop (multiple) services with dependencies and delay.
- > Terminate processes.
- > Shutdown computers.
- > Reboot computers.

### Graphing and Trending:

- > 2D graphs for optimal value comparison.
- > 3D OpenGL rendered graphs for visualization.
- > Automatic database link for historical values.
- > Customizable time-line.
- > Graph updates in real-time.
- > Built-in graph printing in high resolution and full color.



### OUT-OF-THE-BOX POLICIES:

- > 3Com® SNMP based routers and switches.
- > Windows Server NT/2000/2003 & 2008.
- > BrightStor® ARCserve Backup, Windows.
- > Cisco® SNMP based routers and switches.
- > Dell® OpenManage.
- > Microsoft® Exchange 5.5/2000/2003 & 2007.
- > HP/Compaq® Insight Manager.
- > Microsoft® IIS 4.0 à 7.5.
- > Microsoft® ISA Server 2000 et 2006
- > McAfee® NetShield.
- > Symantec® AntiVirus Corporate Edition.
- > Trend Micro® ServerProtect.
- > Microsoft® SQL Server 7.0, 2000,2005 et 2008
- > Veritas® Backup Exec 8.x, 10.x et 11.x.
- > Microsoft® Windows Terminal Server.
- > Microsoft® Windows Terminal Services.
- > Citrix® MetaFrame.