



# SPACEGUARD SRM

## 'Man will use all the space he can'

(Charles Darwin, On the Origin of Species)

Increasing storage demands require effective methods to regulate and control disk space usage. Users tend to quickly fill up all the available space with Internet downloads, MP3 and video files, email attachments and their documents. Simply expanding storage capacity won't do the trick, since that will only add another point of failure, more operational costs and more backup requirements. SpaceGuard SRM will quickly repay itself by cutting storage and backup capacity expansion costs, and will save time by preventing network administrators from regaining disk space from end users. In many cases, the initial investment in unmanaged storage space is more expensive than licensing SpaceGuard SRM.

### OVERVIEW

SpaceGuard SRM is the next-generation disk quota management solution, built from the ground up for Windows 2003/XP/2000/NT. This new quota platform is a result from many years of technological experience in the disk quota management arena. SpaceGuard SRM uses a newly developed and highly optimized quota engine and adds powerful new features such as Active Directory integration for automatic user account and e-mail matching, full support for Microsoft Cluster environments including Active-Passive and Active-Active configurations, unlimited quota levels for alert escalation and our new SmartQuota technology.

### Customer Testimonial:

*"Dickinson College and I are extremely impressed with SpaceGuard. The software has a rather small footprint and utilizes a small amount of server overhead. This was actually a replacement for NTP software's Quota Sentinel and the best move that I have made and the college has made with regards to a quota management software solution."*

**Tim Wetzel** - Dickinson College

### Enterprise Ready - Central Console

SpaceGuard SRM's client-server model lets you manage, configure and monitor quotas from a single location on all file servers. Quota browsing is a breeze thanks to SpaceGuard SRM's customizable network, disk and directory browse tree. Simply connect to a local or remote SpaceGuard SRM agent to view and configure all managed quotas and get an instant status update when looking at the visual quota bar.

### Zero Configuration - Active Directory integration

Why assign user accounts or groups to a quota manually? Why specify the SMTP e-mail address manually for each user? SpaceGuard SRM saves lots of time and configuration hassle by automatically reading this information from the Active Directory. You can also include every Active Directory attribute in the notifications, such as telephone number or address information.

### Set and Forget - Auto-Add quotas

Set up quotas for all home directories including notifications such as popup or e-mail in just 15 minutes and never look at it again. SpaceGuard SRM's Auto-Add quotas will manage the quotas for you in the background and automatically synchronize your quotas with new or removed home directories according to the rules you defined in the quota policy.

### Increase Awareness - Escalate notifications

Each quota can have one or more limits to gradually escalate notifications and ultimately revoke write access:

OMB	40MB	45MB	50MB
	80%	90%	100%
	Popup	e-mail	blockage

### SmartQuota technology

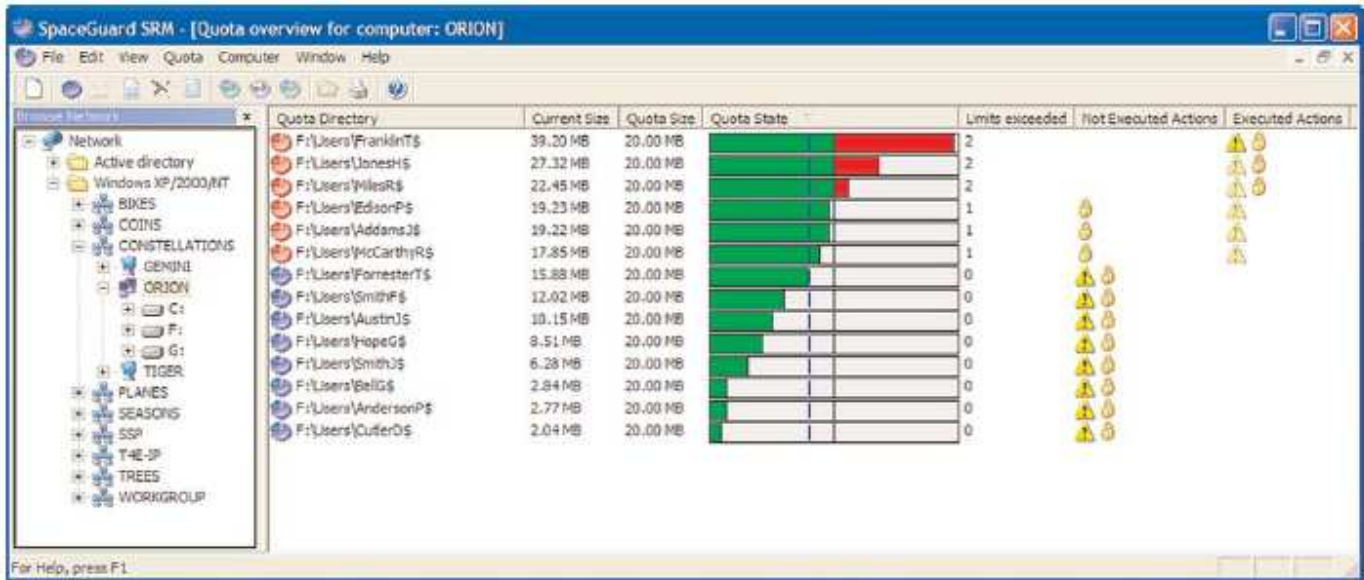
SpaceGuard SRM is SmartQuota enabled, which allows for rapid deployment and mass quota reconfiguration. Using SmartQuota technology, you can quickly add new quota limits to all existing quotas based on a percentage of the current limits. If for instance company policy changes and users are allowed to store 25% more on their home directories, simply select all quotas and change the default revoke access limit from 100% to 125%. All other settings will be applied automatically in the background.

### Notifications and Actions

SpaceGuard SRM supports a wide range of notifications and actions. You can send popup messages, email (both SMTP and Exchange MAPI are supported), Pager/SMS messages with global provider coverage and built-in modem connection software. SpaceGuard SRM can also write entries to the Windows event log, and execute command line actions. Each alarm action can access quota related keywords to include quota status information.

**PLACE QUOTAS ON YOUR WINDOWS NT/2000/2003 & 2008 SERVERS**

More information: [stsales@tools4ever.com](mailto:stsales@tools4ever.com) – +33 478 953 798



## FEATURES

### SpaceGuard SRM

- > Client runs on Windows 2003/XP/2000/NT.
- > Engine runs as a native Windows 2003/XP/2000/NT service.
- > Integrates with Active Directory to automatically match user accounts and e-mail addresses to quotas.
- > Full Microsoft Cluster support including Active-Passive and Active-Active configurations.
- > SmartQuota technology.
- > Highly optimized quota engine; small footprint and low server overhead.
- > Realtime directory scanning and monitoring.
- > Central console interface; monitor, configure and manage quotas and agents on multiple servers from a single console.
- > Advanced 3D shaded quota status bar including limit indicators.
- > Customizable network tree for easy quota and disk browsing.
- > Delegate access: administrators (modify security settings), operators (add/modify/remove), power users (edit/view) and users (view only).
- > Features an API (Application Programming Interface) and a CLI (Command Line Interface) for easy scripting or 3rd party application integration.

### SpaceGuard SRM Actions and Notifications

- > Custom delay and repetition.
- > Use quota related keywords to include quota details.
- > Include Active Directory user attributes in messages.
- > Popup messages.
- > Email (SMTP and Exchange MAPI).
- > Pager and SMS alerting with built-in modem connection software.
- > Windows event log entry.
- > Command line action with parameters.

### SpaceGuard SRM Quotas

- > Automatic home directory matching based on Active Directory.
- > Quota limits based on percentage of disk/directory size.
- > Configurable quota policies; save your configuration in a policy for rapid deployment and propagation.
- > Directory based quotas.
- > Quota enforcement; the engine can automatically revoke write access privileges for a user or a group of users when a revoke access limit has been exceeded.
- > Unlimited quota levels; assign multiple limits on a quota to gradually escalate notifications and ultimately enforce the quota by revoking write access.
- > Auto-Add quotas; the SpaceGuard SRM engine monitors the file system for changes and automatically applies the appropriate quota settings.